



LABORATORY BULLETIN



Central Veterinary Laboratory is pleased to present the Second Trimester Bulletin of FY 2082/83 (2025/26). This bulletin highlights our ongoing efforts in safeguarding animal health through advanced diagnostics for major livestock and poultry diseases, as well as antimicrobial resistance surveillance. We would like to acknowledge the hard work of field staff in submitting samples and the dedication of our laboratory team in providing timely and reliable diagnostic services to support animal health care nationwide.



Government of Nepal
 Ministry of Agriculture and Livestock Development
 Department of Livestock Services

Central Veterinary Laboratory

LABORATORY BULLETIN

Fiscal year: 2082/83

Vol. II | Second Trimester

AT A GLANCE

Samples Tested

13258

Post-Mortem

904

Critical Alert

LSD (5 Districts)
 ASF (7 Districts)
 PPR (1 Districts)
 Rabies (13 Districts)

Post-Mortem Findings

Distribution of Poultry Diseases

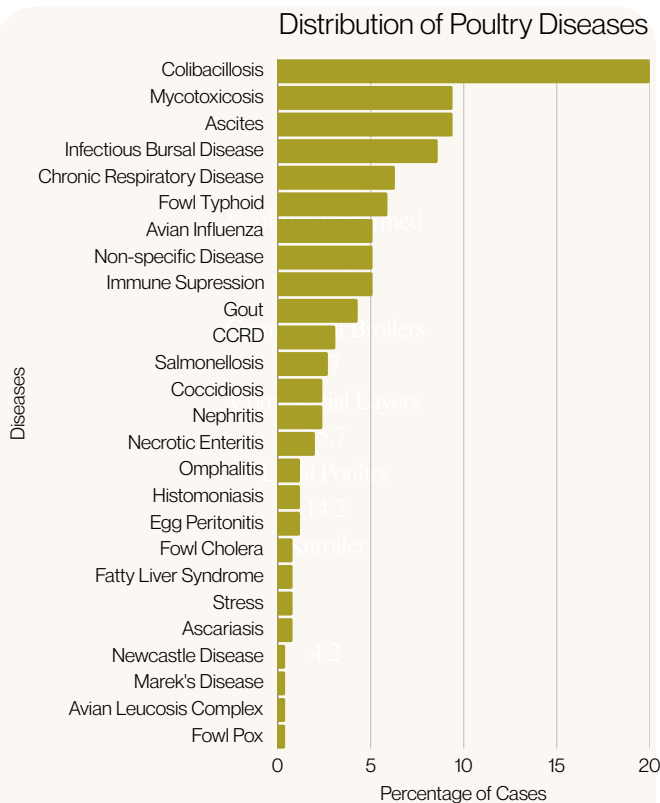


Figure 1: Post-mortem findings

Species	% of PM Performed
Poultry	
Commercial Broilers	45.4
Commercial Layers	23.0
Local Poultry	14.1
Kuroiler	7.8
Parent	1.1
Others	3.3
	94.8
Other Species	
Dog	3.0
Goat	1.5
Pig	0.7
	5.2

Post-Mortem examination in Poultry showed Colibacillosis (20.0%), Mycotoxycosis (9.4%) and Ascites (9.4%) as the major disease, followed by Infectious Bursal Disease (8.6%) and Chronic Respiratory Disease (6.3%). The major findings in other species samples (5.2%), included Rabies in dogs, African Swine Fever (ASF) in pigs, and parasitic infestations in goats.

Lumpy Skin Disease

Total Sample

9 (5 Districts)

Positive

9 (5 Districts)

Test Method

qPCR

Incidence
 Gulmi (2 cases),
 Kailali (2 cases),
 Morang (2 cases),
 Jhapa (2 cases),
 Nuwakot

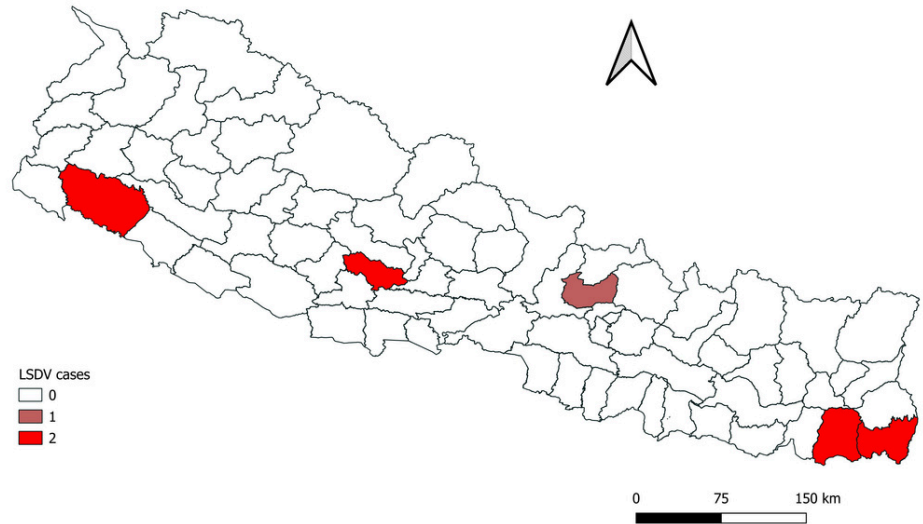


Figure 2: Spatial Distribution of Lumpy Skin Disease (n=9)

Peste des petits ruminants (PPR)

Total Sample

22 (12 Districts)

Positive

4 (1 Districts)

Test Method

qPCR

Incidence
 Gulmi (1 outbreak)

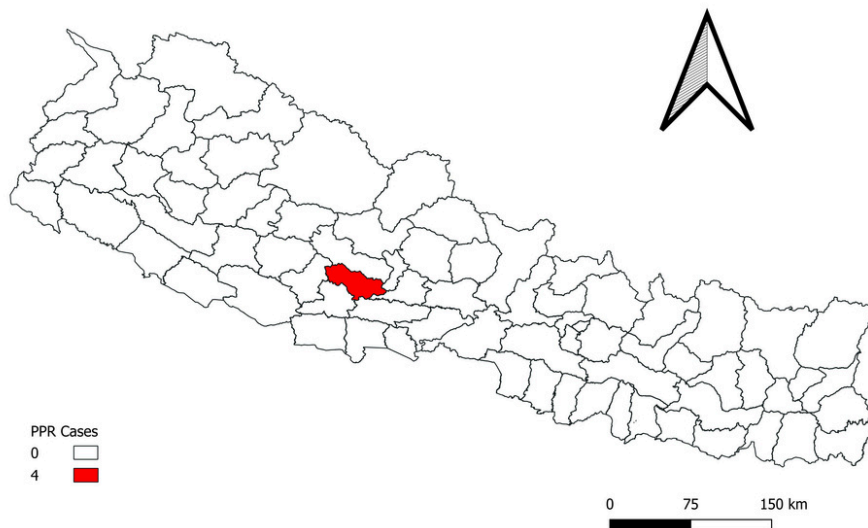


Figure 3: Spatial Distribution of PPR

Avian Influenza

Total Sample

49 (13 Districts)

Result

LPAI

38 +ve (11 Districts)

HPAI

All Negative

Test Method

qPCR

High Incidence:
Kathmandu (13 cases)
Chitwan (11 cases)
Kailali (6 cases)

Low Incidence (1 case)
Bhaktapur, Doti, Jhapa,
Kavre, Lalitpur,
Makwanpur,
Nawalparasi West,
Surkhet

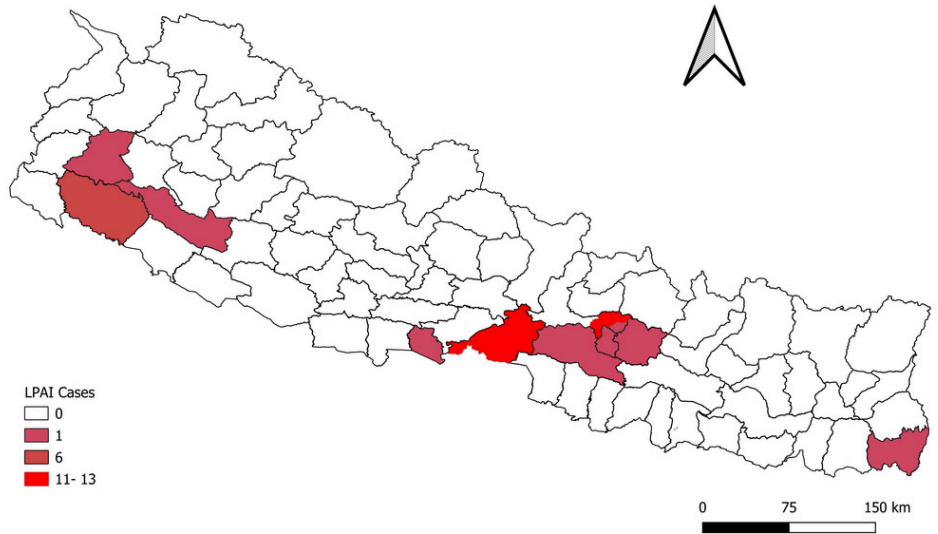
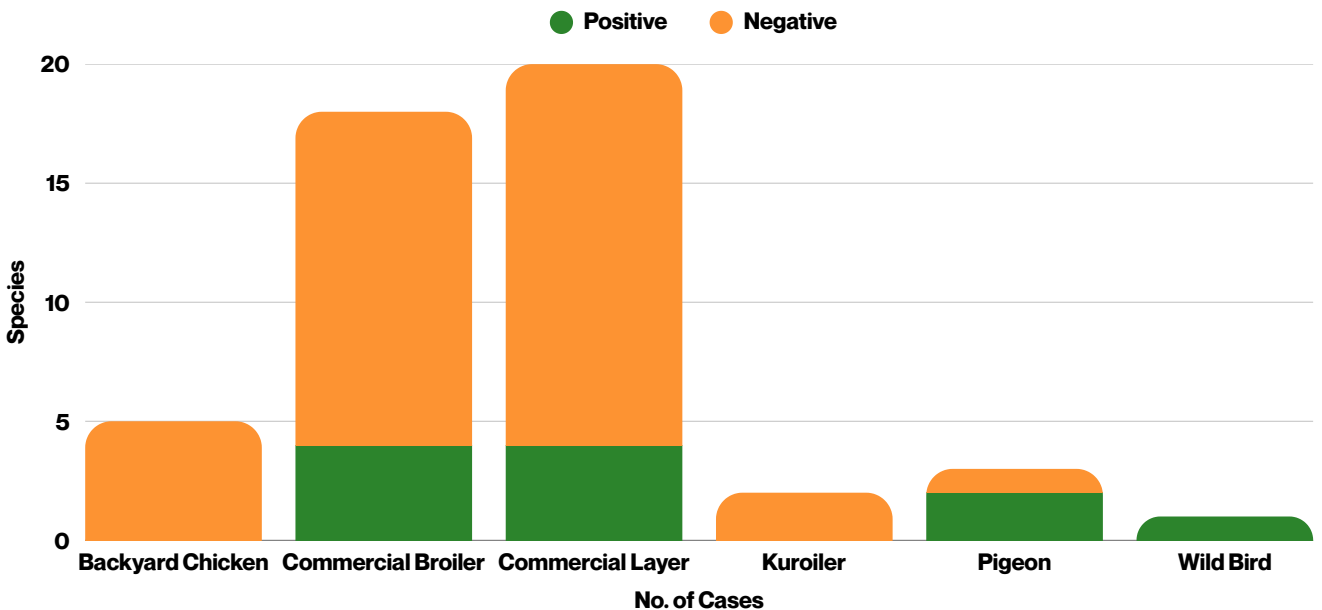


Figure 4: Spatial Distribution of Low Pathogenic Avian Influenza

Species Wise Distribution of LPAI



African Swine Fever

Total Sample

32 (10 district)

Positive

Test Method

Moderate Incidence :
Surkhet (4 cases)
Nawalparasi West (3)

Low Incidence (1-2 cases): Dhading, Dang,
Lalitpur, Rupandehi,
Chitwan

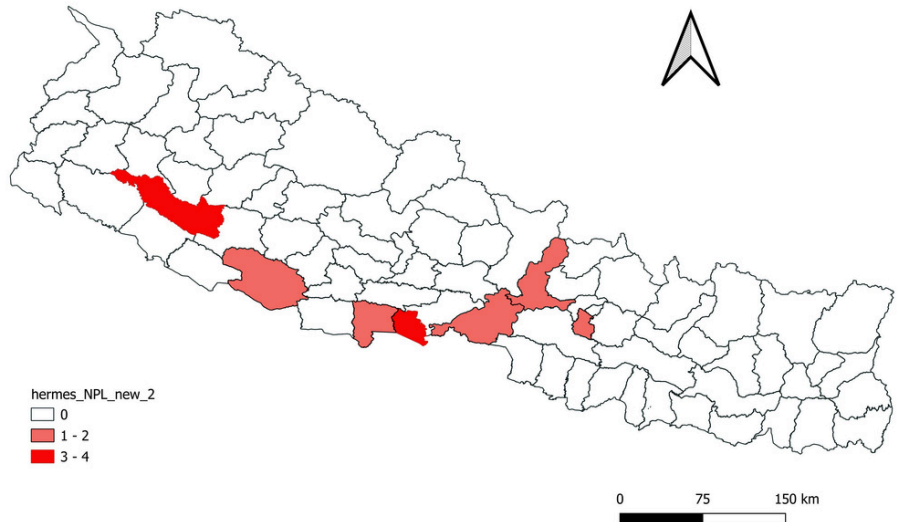


Figure 5: Spatial Distribution of African Swine Fever

Chicken Infectious Anemia (CIA)

Total Sample

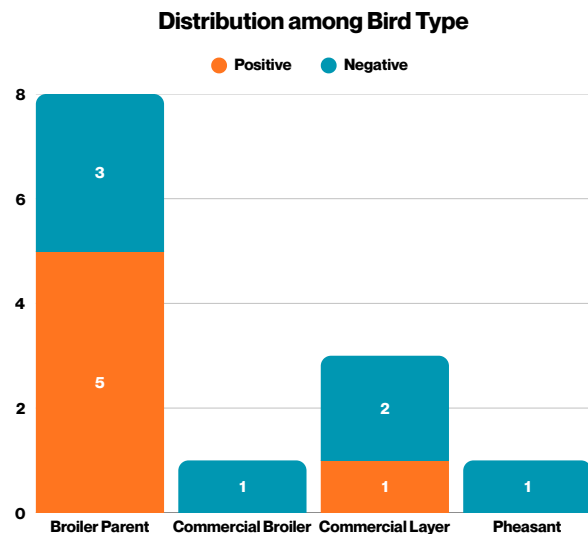
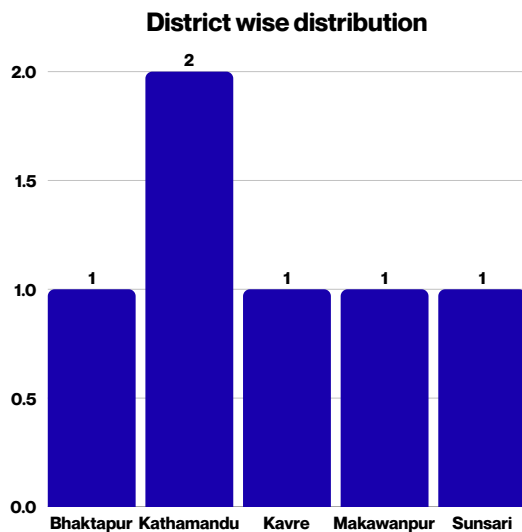
13 (8 Districts)

Positive

6 (5 Districts)

Test Method

Conventional PCR



The graphs and data presented is of first trimester. During this trimester, no cases of CIA were diagnosed.

Rabies

Total Sample

48 (15 Districts)

Only samples received at CVL

Positive

34 (13 Districts)

Test Method

LFA, FAT, qPCR

High Incidence:
Nawalparasi West - 7 cases

Moderate Incidence:
Morang - 3 cases, Chitwan- 3 cases, Jhapa- 4 cases, Rupandehi- 5)

Low Incidence (1–2 cases):
Banke, Bhaktapur, Kathmandu, Lalitpur, Nawalparasi East, Saptari

Specise Wise Distribution of Rabies

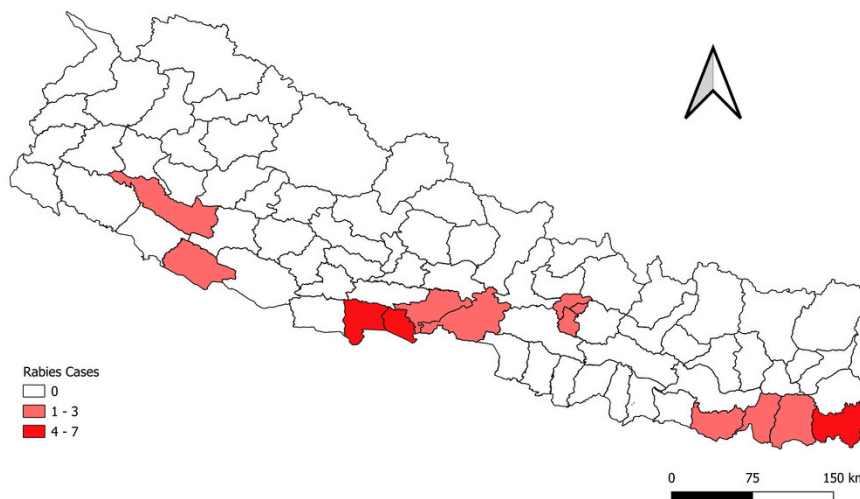
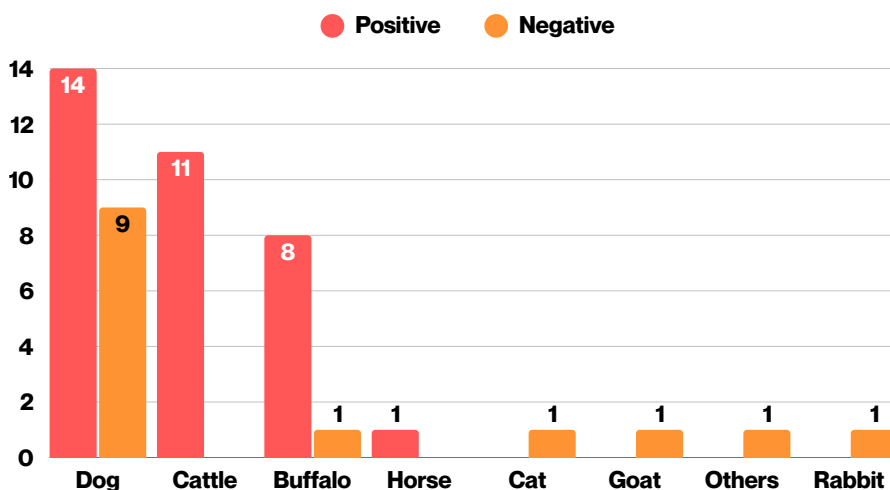
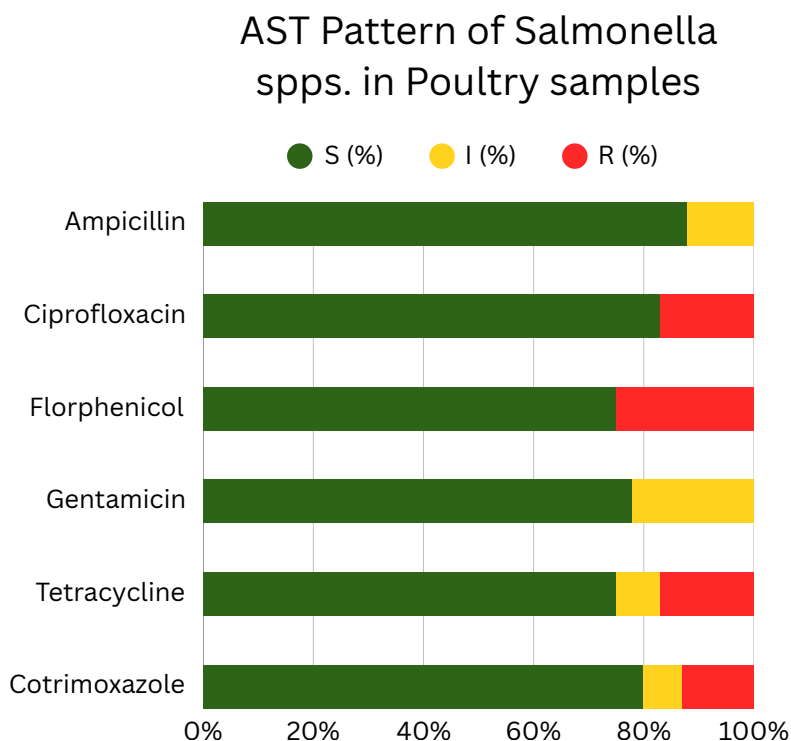
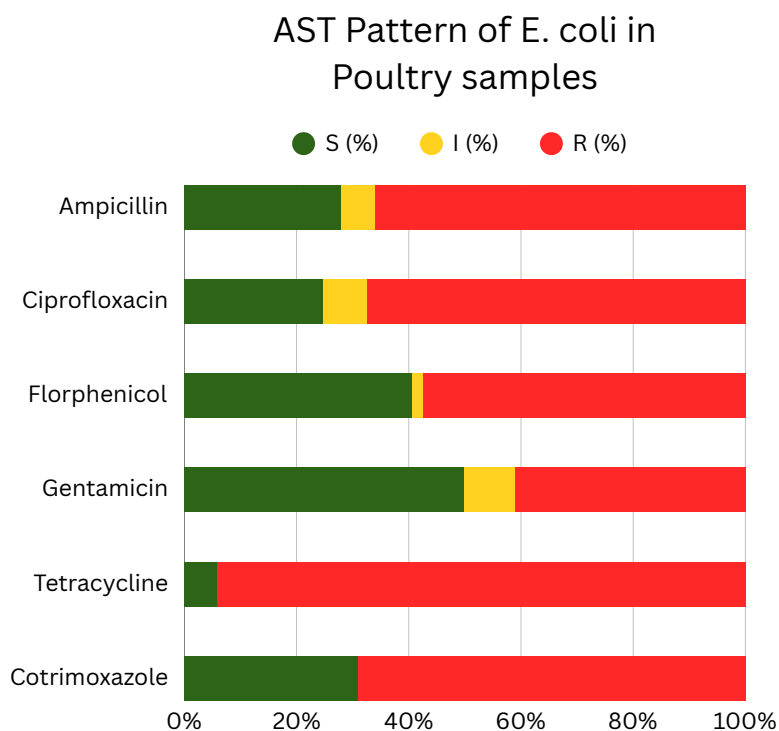


Figure 6: Spatial Distribution of Rabies

Bacterial Isolates and AST Pattern in Poultry Samples

Isolate	No.
Escherichia coli	235
Salmonella spp.	15
Enterococcus spp.	6
Staphylococcus spp.	3
Citrobacter spp.	2
Proteus spp.	2
Pseudomonas spp.	2
Aspergillus spp.	1
Penicillium spp.	1
Shigella	1
Total	268

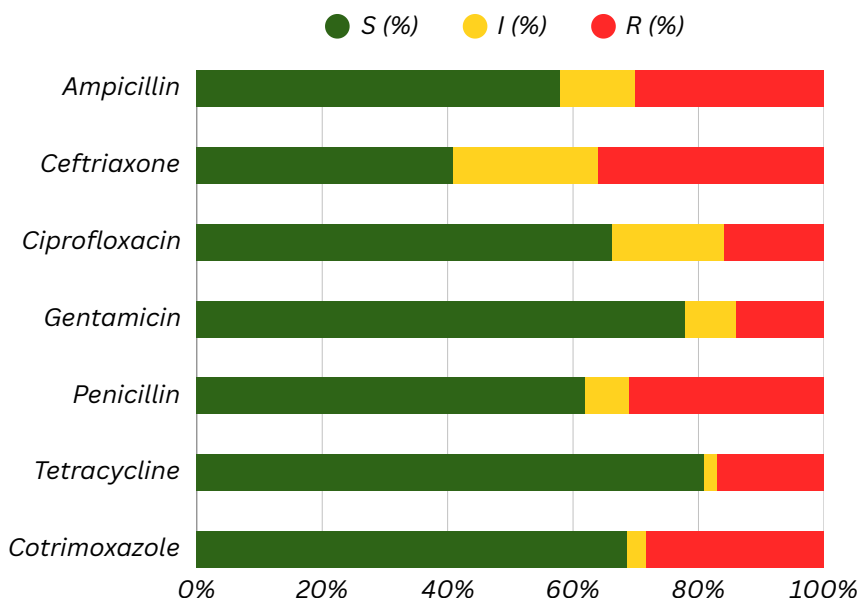


The AST patterns above represents nationwide samples collected from Veterinary laboratories over the past six months.

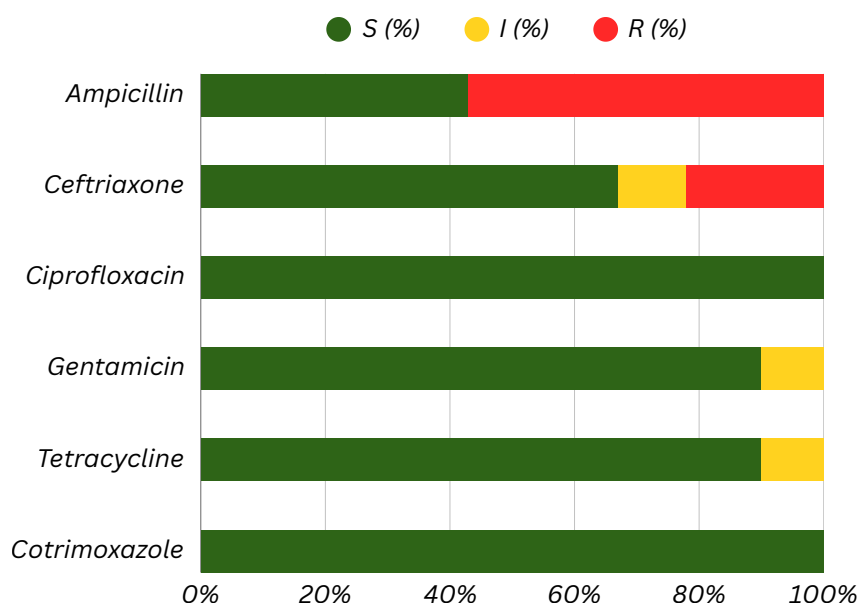
Bacterial Isolates and AST Pattern in Milk Samples

Isolate	No.
Staphylococcus spp.	208
Escherichia coli	36
Streptococcus spp.	32
Klebsiella spp.	10
Enterococcus spp.	7
Candida spp.	3
Mucor	3
Pseudomonas spp.	2
Acinetobacter spp.	1
Citrobacter spp.	1
Corynebacterium spp.	1
Trueperella spp.	1
Total	305

AST Pattern of Staphylococcus spp. in Milk



AST Pattern of Klebsiella spp. in Milk

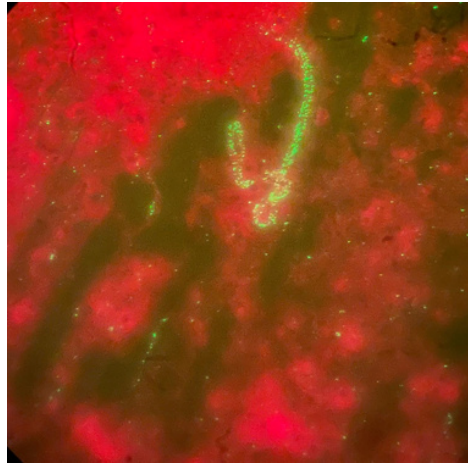


The AST patterns above represents nationwide samples collected from Veterinary laboratories over the past six months.

Glimpses of Laboratory Activities



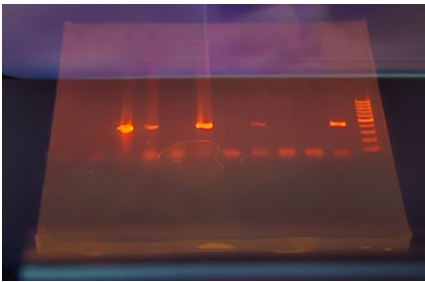
Brain sample collection by occipital foramen technique



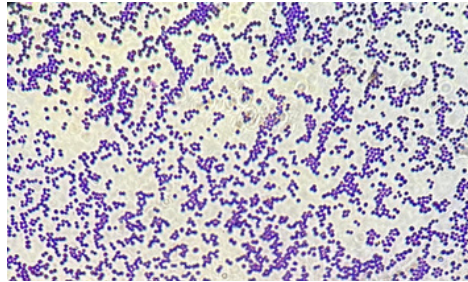
Fluorescent Antibody Test Positive for Rabies



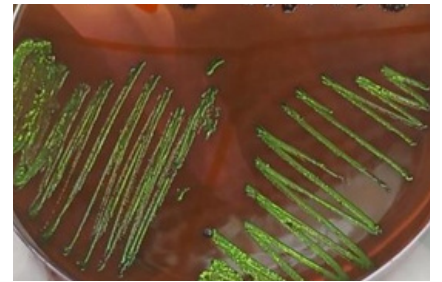
Ocular swab collection from PPR suspected goat



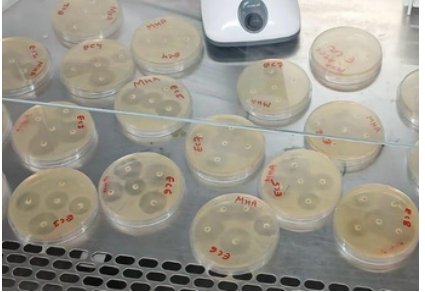
Chicken Infectious Anemia Positive in Conventional PCR



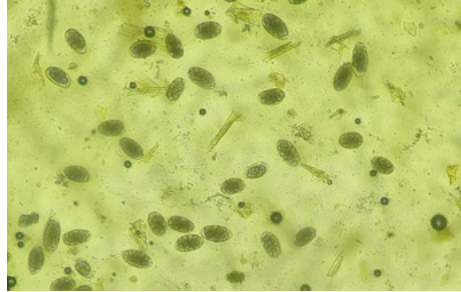
Gram Positive Cocci in Gram Staining



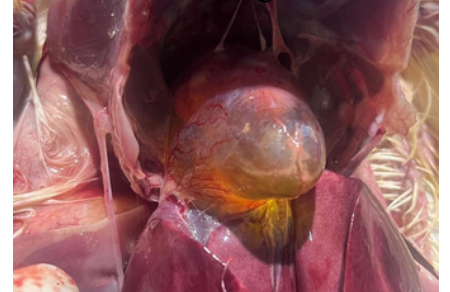
Metallic Sheen of *E. coli* in EMB agar



Antibiotic Sensitivity Test in MHA



Eggs of Internal Parasite



Hydropericardium Syndrome in Broiler



White Necrotic foci in Liver of Broiler



Cystic Oviduct in Layers in False layer syndrome



Haemorrhage in Thigh Muscle of Broiler in IBD

The results and interpretations in this bulletin are based on laboratory test performed on the samples received during first trimester.